



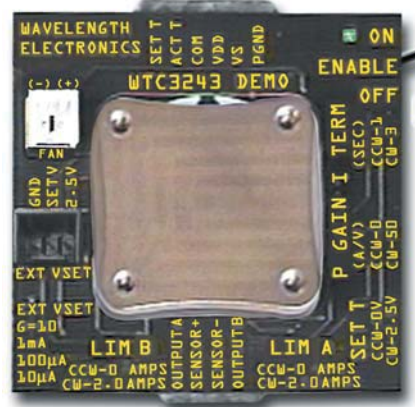
**WAVELENGTH
ELECTRONICS**

WTC3293

**WTC3243 Thermoelectric Temperature
Controller Evaluation Board**

GENERAL DESCRIPTION:

Quickly interface a WTC3243 temperature controller to your thermoelectric or resistive heater load without having to design a printed circuit board. Connect a WTC3243 thermoelectric Temperature Controller to the easy-to-configure evaluation board to control temperature using thermistors, 100 Ω Platinum RTDs, or linear temperature sensors such as the LM335 by National Semiconductor or the AD590 by Analog Devices. Adjust temperature using the onboard trimpot or use the external VSET connector to adjust the setpoint temperature using a remote potentiometer or voltage source. Other adjustable trimpots configure heat and cool current limits, proportional gain, and integrator time constant. A five-position dipswitch allows the sensor bias current and sensor gain to be optimized for your sensor type. The removable input cable set allows easy connection to your power supply and monitoring equipment while the output cable set quickly connects to your thermal load and temperature sensor. High power applications can use the onboard fan connector to power a WXC303 or WXC304 (+5 or +12 V) DC fan attached to a WHS302 heatsink.



WTC3243 NOT INCLUDED



WTC3293 EVALUATION BOARD FOR THE WTC3243

FEATURES:

- Controls temperature using thermistors and 100 Ω Platinum RTDs, LM335 and AD590 type temperature sensors
- Adjustable Heat and Cool Current Limits
- Adjustable Proportional Gain (10 to 75 A / V)
- Adjustable Integrator Time Constant (1 to 3 Seconds)
- Selectable Sensor Bias (10 μA, 100 μA, and 1 mA)
- Selectable Sensor Gain (1 or 10)
- Enable/Disable Switch and LED
- Includes Input/Output Cable Set
- Includes a Fan Connector
- Easily connects to an external control potentiometer or voltage source

**Figure 1
Top View**

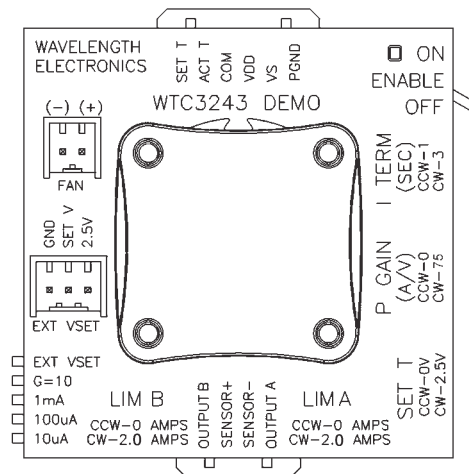


Figure 2
WTC3293 Schematic

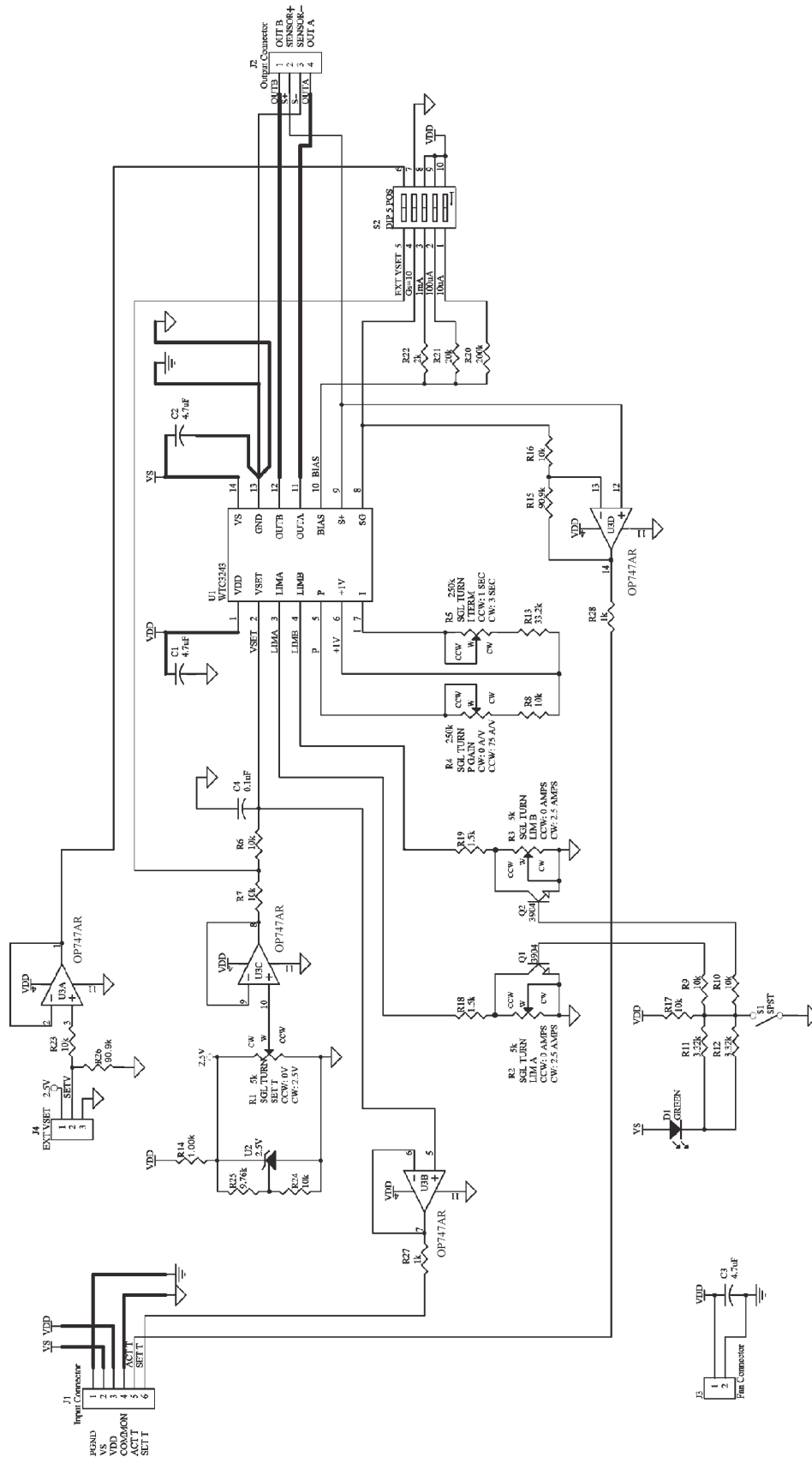


Figure 3
Assembling the WTC3243 Thermoelectric Controller to the WTC3293 Eval Board

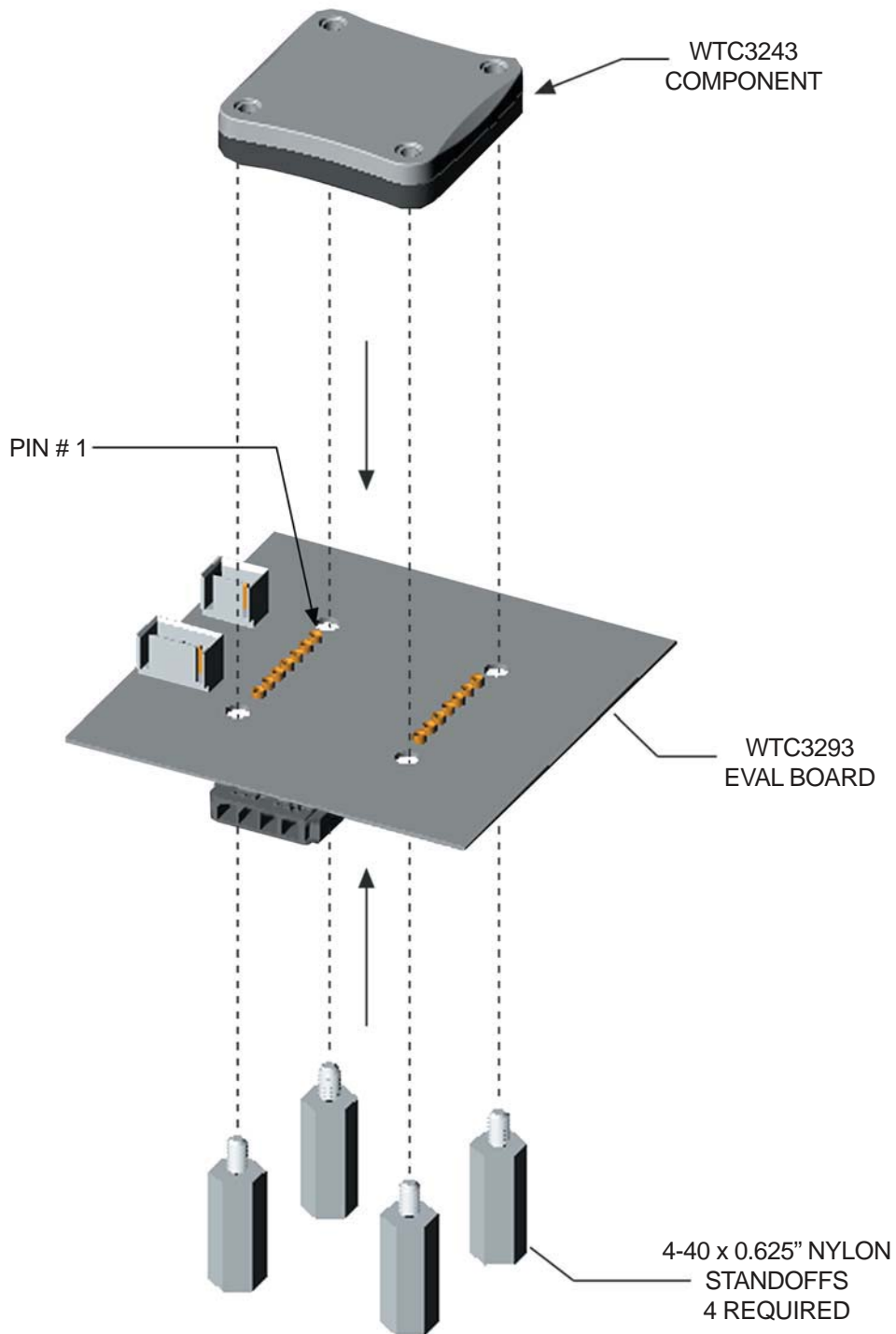


Table 1 - INPUT CABLE

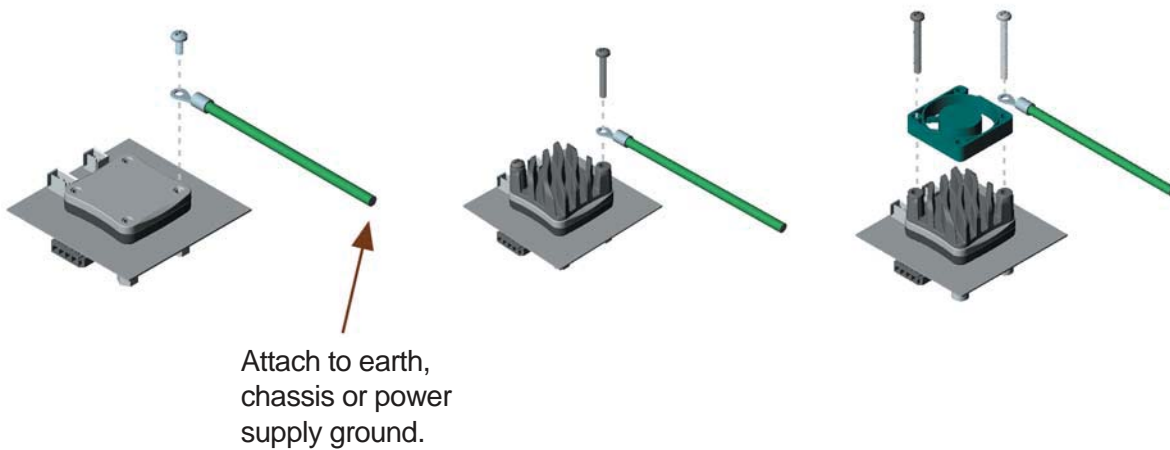
PIN #	Load Type	Function
1	BLUE	PGND
2	ORANGE	VS
3	RED	VDD
4	BLACK	COM
5	WHITE	ACT T
6	GREEN	SET T

Table 2 - OUTPUT CABLE

PIN #	Load Type	Function
1	RED	OUTPUT B
2	GREEN	SENSOR +
3	WHITE	SENSOR -
4	BLACK	OUTPUT A

Figure 4

Attaching the optional grounding strap to the heat spreader for low noise operation.



CONFIGURING THE EVALUATION BOARD

STEP 1: ATTACHING HEATSINK AND FANS

The WTC3243 is designed to handle currents as high as 2.0 Amps. Refer to the WTC3243 data sheet to determine the SOA and proper thermal solution for your application. Refer to the WHS302 and WXC303/WXC304 datasheets for proper assembly instructions. (WEV300, WEV301, and WEV302 Thermal Solutions Kits include: heatsink, thermal washer, fan, and screw fasteners).

The onboard fan connector makes connecting a fan quick and easy. The fan connector uses IDC (Insulation Displacement Contacts) to connect the fan wires to the connector housing. Place the fan's red wire in the positive contact indicated on the evaluation board and press down using the end of a screwdriver. Perform the same step for connecting the fan's negative terminal.

STEP 2: CONFIGURING THE HEAT AND COOL CURRENT LIMITS

The WTC3293 LIMA and LIMB trimpots independently adjust the heat and cool current limits from zero to a full 2.0 Amps. Use Table 3 to adjust the heat and cool current limits. Do not exceed SOA limits. An online tool for calculating the SOA is available at:

<http://www.teamwavelength.com/support/calculator/soa/soatc.php>

Table 3 - LIMA and LIMB Current Limit Trimpot Configuration

Sensor Type	Load Type	LIMA Trimpot	LIMB Trimpot
Thermistor	Thermoelectric	Cool Current Limit	Heat Current Limit
100 Ω Platinum RTD, LM335, AD590	Thermoelectric	Heat Current Limit	Cool Current Limit
Thermistor	Resistive Heater	Turn Fully CCW	Heat Current Limit
100 Ω Platinum RTD, LM335, AD590	Resistive Heater	Heat Current Limit	Turn Fully CCW

STEP 3: CONNECTING YOUR THERMAL LOAD

Use Table 4 to determine how to connect the WTC3243 outputs (OUTA or OUTB) to your thermoelectric or resistive heater.

Table 4 - Output Configuration

Sensor Type	Load Type	Output A	Output B
Thermistor	Thermoelectric	Negative TE Terminal	Positive TE Terminal
100 Ω Platinum RTD, LM335, AD590	Thermoelectric	Positive TE Terminal	Negative TE Terminal
Thermistor	Resistive Heater	Quick Connection: Simply connect the resistive heater to OUTA and OUTB. Adjust the cooling current limit to zero by turning the LIMA trimpot fully CCW. Maximum Voltage Connection: Connect one side of the resistive heater to OUTB and the other side to the voltage source V_s .	
100 Ω Platinum RTD, LM335, AD590	Resistive Heater	Quick Connection: Simply connect the resistive heater to OUTA and OUTB. Adjust the cooling current limit to zero by turning the LIMB trimpot fully CCW. Maximum Voltage Connection: Connect one side of the resistive heater to OUTA and the other side to the voltage source V_s .	

CONFIGURING THE EVALUATION BOARD

STEP 4: CONNECTING YOUR TEMPERATURE SENSOR

Use Table 5 to configure the evaluation board for your temperature sensor type.

Table 5 - Sensor Dipswitch Configuration

Sensor Type	10 μ A	100 μ A	1 mA	G=10	EXT VSET
0 to 2.5 k Ω Thermistor	Off	On	Off	On	N/A
2.5 k Ω to 25 k Ω Thermistor	Off	On	Off	Off	
25 k Ω to 250 k Ω Thermistor	On	Off	Off	Off	
100 Ω Platinum RTD	Off	Off	On	On	
LM335	Off	Off	On	Off	
AD590 (Follow the WTC3243 datasheet for connecting an AD590)	Off	Off	Off	Off	

STEP 5: ADJUSTING THE LOOP COMPENSATION PROPORTIONAL GAIN AND INTEGRATOR TIME CONSTANT

Use Table 6 to configure the evaluation board loop compensation for optimal temperature stability. Start with these settings and begin increasing the proportional gain while decreasing the integrator time constant until optimal stability is achieved.

Table 6 - Proportional Gain and Integrator Time Constant Trimpot Configuration

Sensor Type	P Gain [A / V]	I Time Constant [Seconds]
Thermistor	10	3
100 Ω Platinum RTD	50	1
LM335	25	2
AD590 (Attach a 10 k Ω resistor across Sensor + and Sensor -)	25	2

STEP 6: ATTACHING THE V_{DD} AND V_S POWER SUPPLIES

For simple operation tie V_{DD} to V_S . The V_{DD} power supply is used to power the WTC3243 internal control electronics and must be capable of supplying 100 mA of current. The V_S power supply is used to power the WTC3243 output H-Bridge and must be capable of supplying a current greater than the LIMA and LIMB current limit settings. A separate V_S power supply allows the H-Bridge to operate at a voltage lower than the 4.5 volts required by the V_{DD} supply. Select V_S approximately 2.5 volts above the maximum voltage drop across OUTA and OUTB to reduce the power dissipation in the WTC3243 component and minimize your heatsinking requirements. Connect both power supplies via the input connector.

CONFIGURING THE EVALUATION BOARD

STEP 7: MONITORING THE TEMPERATURE SETPOINT VOLTAGE AND ACTUAL TEMPERATURE SENSOR VOLTAGE

The input connector includes three lines for externally monitoring the WTC3243 temperature setpoint voltage (SET T) and the actual temperature sensor voltage levels (ACT T). Both the SET T and ACT T voltages are measured from the COMMON terminal.

Use Table 7 to convert these monitor voltages to sensor resistance for thermistors and RTDs or temperature for the LM335 and AD590.

Table 7 - Converting the SET T and ACT T Monitor Voltages

Sensor Type	Voltage Conversion
Thermistor	$R = \frac{\text{Voltage}^*}{\text{Sensor Bias Current}} [\Omega]$
100 Ω Platinum RTD	$R = \frac{\text{Voltage}^*}{\text{Sensor Bias Current}} / 10 [\Omega]$
LM335 or AD590	$T = (\text{Voltage}^* - 2.7315) * 100 [^{\circ}\text{C}]$

* Voltage refers to the measurements made from the ACT T or SET T terminals on the input connection.

STEP 8: ADJUSTING THE TEMPERATURE SETPOINT VOLTAGE

The setpoint voltage can be adjusted from 0 to 2.5 Volts either by using the board's onboard SET T trimpot or by connecting an external voltage source or potentiometer to the EXT VSET connector.

Connecting An External Potentiometer:

The onboard EXT VSET connector makes connecting a potentiometer quick and easy. The EXT VSET connector uses IDC (Insulation Displacement Contacts) to connect size #28 wires to the connector housing. Place the potentiometer's CW terminal in the contact marked 2.5V on the board and press down using the end of a screwdriver. Perform the same step for connecting the potentiometer's wiper (W) to the contact marked SETV and CCW terminal to the contact marked GND.

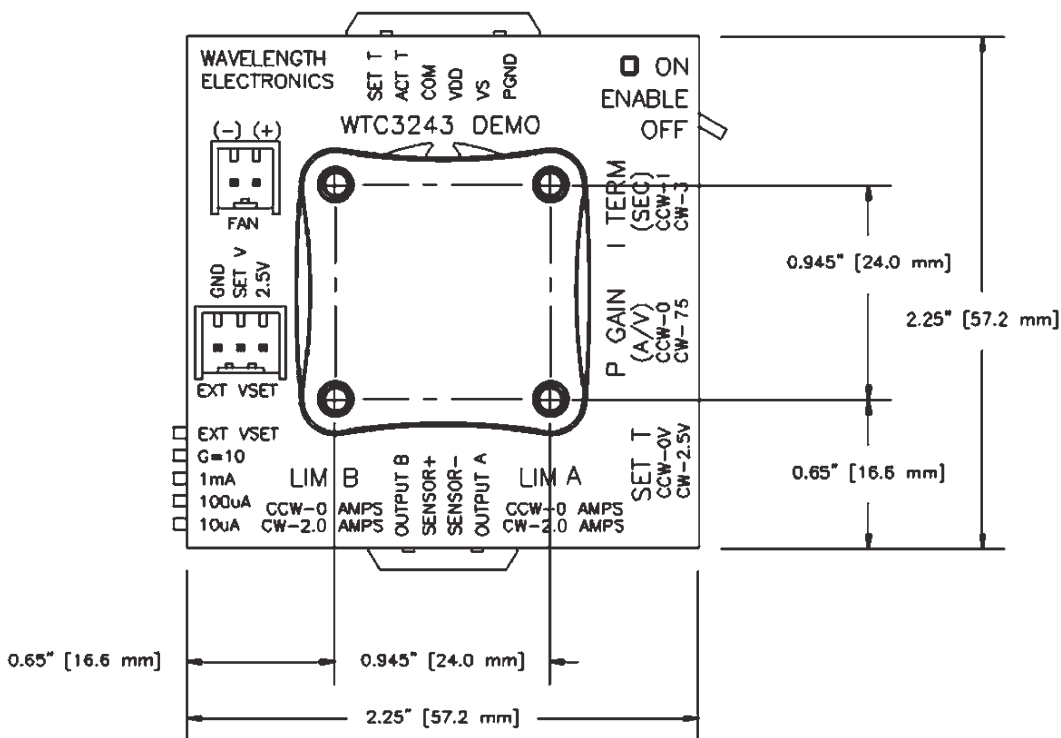
Connecting An External Voltage Source:

The onboard EXT VSET connector makes connecting an external voltage source quick and easy. The EXT VSET connector uses IDC (Insulation Displacement Contacts) to connect size #28 wires to the connector housing. Place the external voltage source's positive output in the contact marked SETV on the board and press down using the end of a screwdriver. Perform the same step by connecting the external voltage source's negative output to the contact marked GND on the evaluation board.

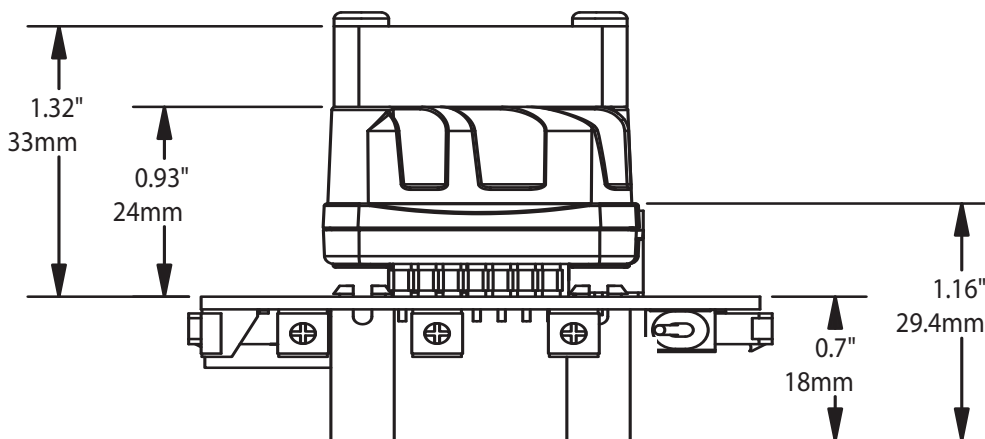
STEP 9: ENABLING AND DISABLING THE OUTPUT CURRENT

The WTC3243 output current can be enabled and disabled using the onboard toggle switch. The output is enabled when the green ON LED indicator is lit.

TOP VIEW -- Board



SIDE VIEW -- with Fan, Heatsink & Mounting Standoffs



CERTIFICATION:

Wavelength Electronics (Wavelength) certifies that this product met it's published specifications at the time of shipment. Wavelength further certifies that its calibration measurements are traceable to the United States National Institute of Standards and Technology, to the extent allowed by that organization's calibration facilities, and to the calibration facilities of other International Standards Organization members.

WARRANTY:

This Wavelength product is warranted against defects in materials and workmanship for a period of 90 days from date of shipment. During the warranty period, Wavelength will, at its option, either repair or replace products which prove to be defective.

WARRANTY SERVICE:

For warranty service or repair, this product must be returned to the factory. An RMA is required for products returned to Wavelength for warranty service. The Buyer shall prepay shipping charges to Wavelength and Wavelength shall pay shipping charges to return the product to the Buyer upon determination of defective materials or workmanship. However, the Buyer shall pay all shipping charges, duties, and taxes for products returned to Wavelength from another country.

LIMITATIONS OF WARRANTY:

The warranty shall not apply to defects resulting from improper use or misuse of the product or operation outside published specifications.

No other warranty is expressed or implied. Wavelength specifically disclaims the implied warranties of merchantability and fitness for a particular purpose.

EXCLUSIVE REMEDIES:

The remedies provided herein are the Buyer's sole and exclusive remedies. Wavelength shall not be liable for any direct, indirect, special, incidental, or consequential damages, whether based on contract, tort, or any other legal theory.

NOTICE:

The information contained in this document is subject to change without notice. Wavelength will not be liable for errors contained herein or for incidental or consequential damages in connection with the furnishing, performance, or use of this material. No part of this document may be photocopied, reproduced, or translated to another language without the prior written consent of Wavelength.

SAFETY:

There are no user serviceable parts inside this product. Return the product to Wavelength for service and repair to ensure that safety features are maintained.

LIFE SUPPORT POLICY:

As a general policy, Wavelength Electronics, Inc. does not recommend the use of any of its products in life support applications where the failure or malfunction of the Wavelength product can be reasonably expected to cause failure of the life support device or to significantly affect its safety or effectiveness. Wavelength will not knowingly sell its products for use in such applications unless it receives written assurances satisfactory to Wavelength that the risks of injury or damage have been minimized, the customer assumes all such risks, and there is no product liability for Wavelength. Examples of devices considered to be life support devices are neonatal oxygen analyzers, nerve stimulators (for any use), auto transfusion devices, blood pumps, defibrillators, arrhythmia detectors and alarms, pacemakers, hemodialysis systems, peritoneal dialysis systems, ventilators of all types, and infusion pumps as well as other devices designated as "critical" by the FDA. The above are representative examples only and are not intended to be conclusive or exclusive of any other life support device.

REVISION HISTORY		
REVISION	DATE	NOTES
REV. E	24-Nov-03	Release
REV. F	5-Oct-09	Updated to reflect RoHS compliance & added Revision History block



WAVELENGTH ELECTRONICS, INC.
51 Evergreen Drive
Bozeman, Montana, 59715

phone: (406) 587-4910 Sales/Tech Support
fax: (406) 587-4911
e-mail: sales@teamwavelength.com
web: www.teamwavelength.com