



## WLD3393 Rev B

### WLD3343 Laser Diode Driver Demo Board

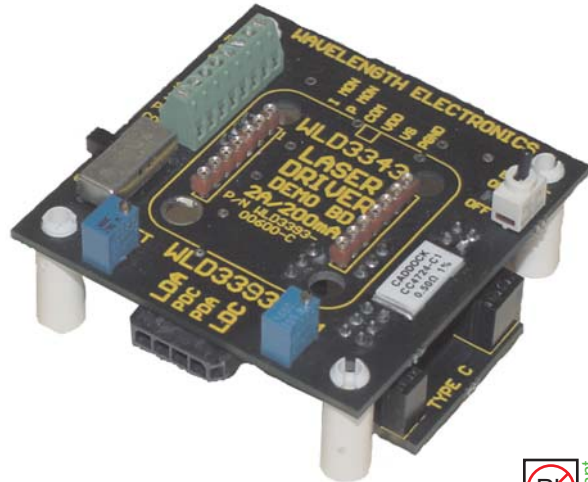
#### GENERAL DESCRIPTION:

Use the WLD3393 Demo Board to rapidly prototype a complete laser diode control system using the cutting edge technology of the WLD3343 Laser Diode Driver. Onboard switches, connectors, and trimpots make configuration and operation simple. Input and output cables are also included.

Operate in either constant current (CC) or constant power (CP) mode. An onboard 12-turn trimpot allows fine adjustment of laser diode forward current (CC Mode) or monitor photodiode current (CP Mode). Another trimpot sets the laser diode forward current limit. The input cable allows easy connection to your power supply and monitoring equipment while the output cable quickly connects to your laser diode and monitor photodiode.

High power applications can use the onboard fan connector to power a WXC303 or WXC304 (+5 VDC or +12 VDC) fan attached to a WHS302 heatsink.

WLD3343 NOT INCLUDED



#### FEATURES:

- Operates all Laser Diode Pin Configurations
- Two Configurable Output Current Ranges (200 mA or 2.0 Amps)
- Constant Current or Constant Power Operation
- Onboard Current Setpoint Trimpot
- Adjustable Current Limit
- Enable/Disable Switch and LED
- Includes Input/Output Cable Set
- Includes a Fan Connector
- Easily Connects to an External Control Potentiometer or Voltage Source

WLD3393 DEMO BOARD FOR THE WLD3343

Figure 1: Top View

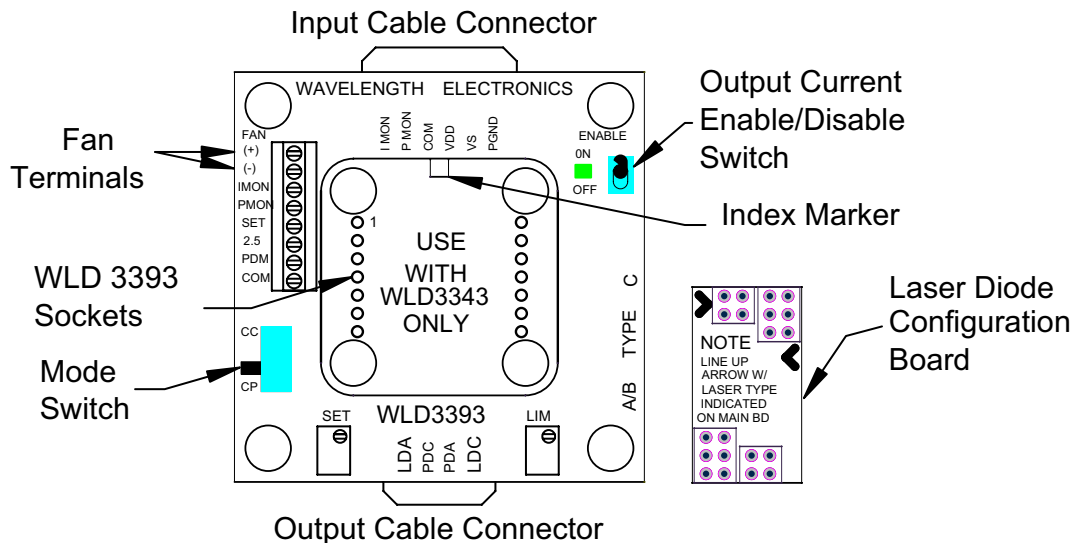
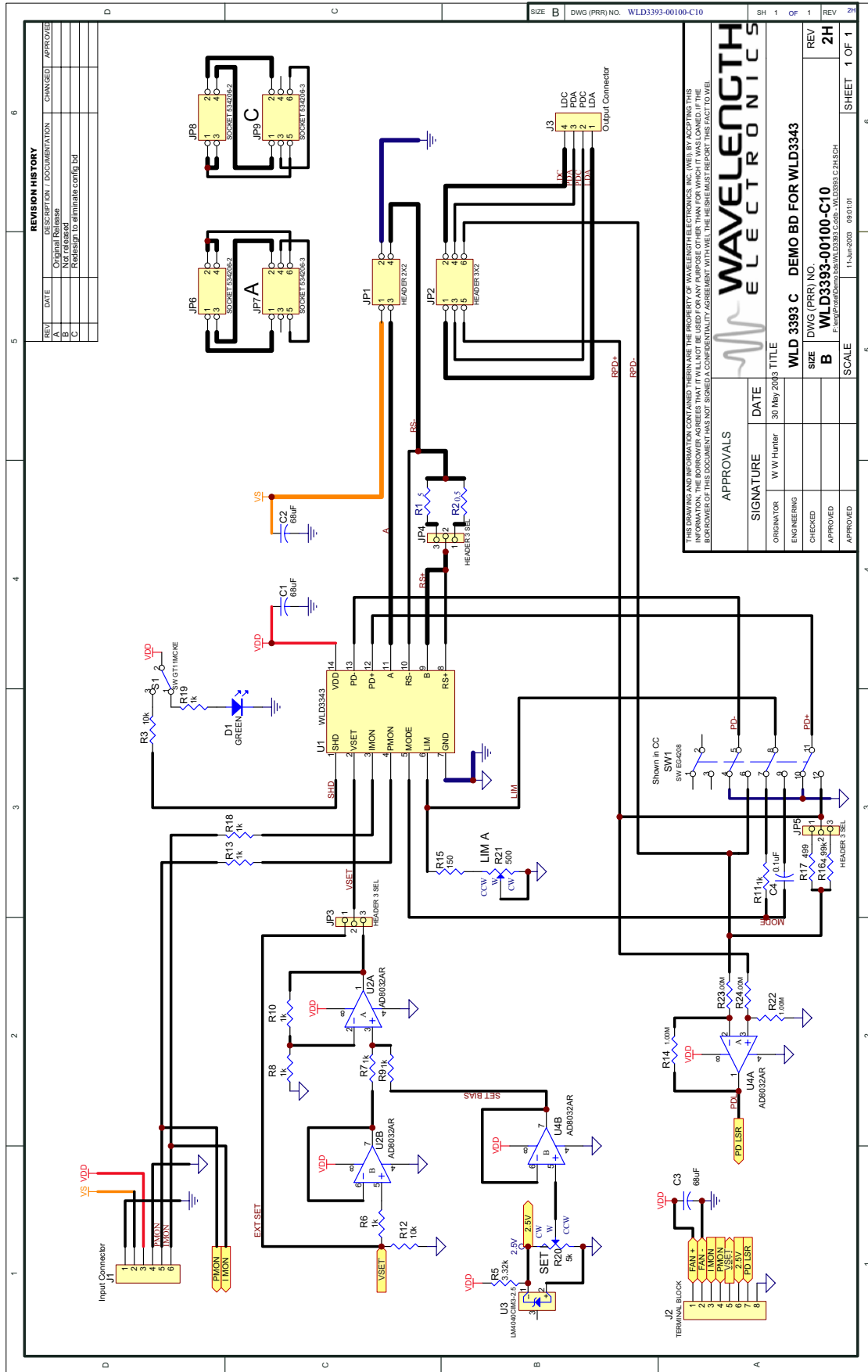


Figure 2: WLD3393 Schematic



**REVISION HISTORY**

REV	DATE	DESCRIPTION / DOCUMENTATION	CHANGED	APPROVED
A		Original Release		
B		Redesign to eliminate config bit		
C				

**WAVELENGTH ELECTRONICS**

THIS DRAWING AND INFORMATION CONTAINED HEREIN ARE THE PROPERTY OF WAVELENGTH ELECTRONICS, INC. (WEL). BY ACCEPTING THIS INFORMATION, THE BORROWER AGREES THAT IT WILL NOT BE USED FOR ANY PURPOSE OTHER THAN FOR WHICH IT WAS LOANED. IF THE BORROWER OF THIS DOCUMENT HAS NOT SIGNED A CONFIDENTIALITY AGREEMENT WITH WEL, THE HEREIN MUST REPORT THIS FACT TO WEL.

APPROVALS		DATE
SIGNATURE	DATE	
ORIGINATOR	30 May 2003	
ENGINEERING		
CHECKED		
APPROVED		
APPROVED		

WLD 3393 C DEMO BD FOR WLD3343  
 DWG (PRR) NO. WLD3393-00100-C10  
 SCALE 1:1  
 REV 2H  
 SHEET 1 OF 1

### SETUP INFORMATION

To set up the WLD for your project, you'll need a few pieces of information. Here's a handy list of what you'll need to know before you start wiring [it's also good to have this information if you need to call for technical support].

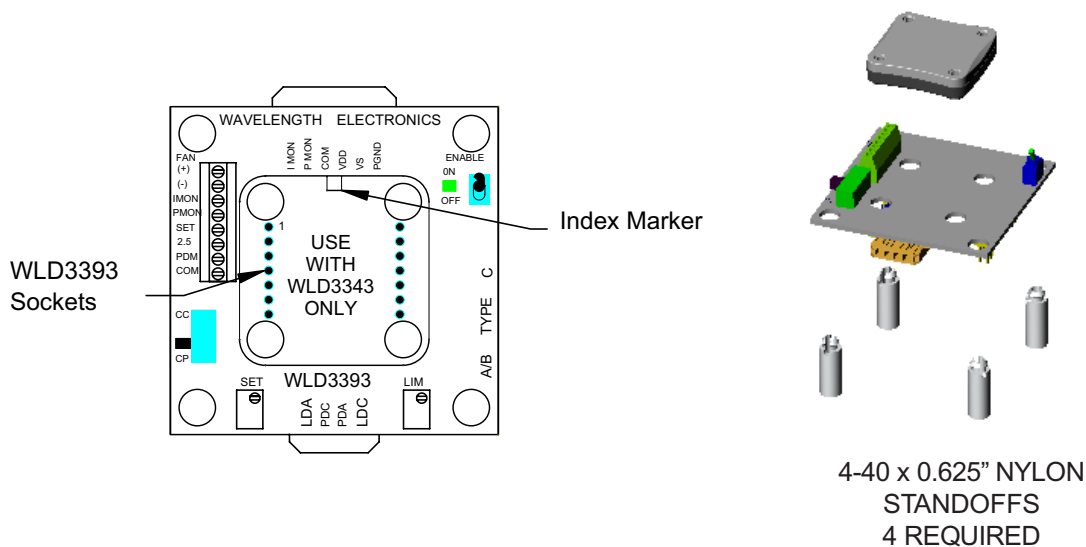
Description	Value in your application	Notes
Laser Diode Configuration	<b>A B or C</b>	See Figure 4 for schematics. If you have no photodiode, follow instructions for Type A laser diodes.
Laser Diode Max Current		
Operating LD Current		If greater than 200mA, make sure to check the SOA curve in the WLD3343 datasheet and use a Thermal Solutions kit (Fan, Heatsink, and Thermal Washer) or equivalent
Operating PD Current		
Operating Mode	<b>CP or CC</b>	Constant Current: Laser diode current is fixed, power varies. Constant Power: Laser diode current varies. Photodiode current is fixed. Power output is fixed.
Power Supply Voltage		If greater than 5V, make sure to check the SOA curve in the WLD3343 datasheet and use a Thermal Solutions kit (Fan, Heatsink, and Thermal Washer) or equivalent. An online tool for calculating the WLD3343 Safe Operating Area is available at: <a href="http://www.teamwavelength.com/support/calculator/soa/soald.php">http://www.teamwavelength.com/support/calculator/soa/soald.php</a>

**Follow the next ten steps sequentially to safely operate the WLD with your laser diode. Complete steps 1 through 4 before applying power to the board.**

#### STEP 1: INSTALL the WLD3343 on the demo board

Match up the notch in the WLD3343 with the index marker shown in Figure 3. Align the WLD3343 pins with the WLD3393 sockets ensuring that all pins are lined up. Press firmly to seat the WLD3343. **Make sure that none of the pins of the WLD3343 were bent during insertion before continuing.**

**Figure 3: Location of Index Marker and sockets; Standoff assembly**



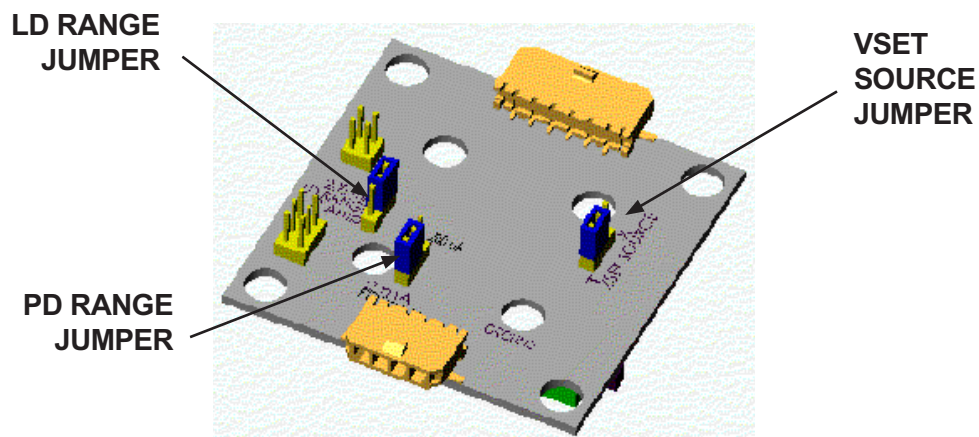
## STEP 2: CONFIGURE FOR CONSTANT CURRENT OR CONSTANT POWER MODE

The two modes of operation supported by the WLD3393 are constant current and constant power mode. **It is very important to note that the WLD3393 should be configured for either constant current or constant power mode BEFORE power is applied. Changing operating mode while the WLD3393 is operating can result in damage to your laser diode.** In constant current mode,  $V_{Set}$  correlates directly to the laser diode current, regardless of laser diode power intensity. In constant power mode, the WLD controls the laser diode using the photodiode to achieve a laser intensity that is directly proportional to  $V_{Set}$ .

*Constant Current mode* ignores the laser's photodiode. The WLD3393, however, is designed to allow you to monitor the laser's photodiode while running in this mode. Monitor the voltage at the PDM pin on the terminal block on the top side of the WLD3393. Before powering the unit on to operate in constant current mode, make sure that the mode switch is in the CC position (see Figure 1). Select the output current range by setting the LD RANGE jumper on the back of the WLD3393 to either the 200mA or the 2A position. See Figure 4 for location.

*Constant power mode* utilizes the laser's photodiode to regulate the intensity of the laser in proportion to  $V_{Set}$ . While the unit is NOT powered, make sure the mode switch is in the CP position to configure the WLD3393 for constant power mode (see Figure 1). Set the PD RANGE jumper on the bottom of the WLD3393 to either the 200 $\mu$ A or the 2mA range, depending on the specifications of your photodiode. See Figure 6 for the location of the PD Current Range jumper. It is important to make sure that the correct PD current range is selected as the WLD3393 may overdrive the laser if the PD range is configured incorrectly, resulting in permanent damage to the laser. Use the LD RANGE jumper to select between the 200mA and 2A range based on the rating of the laser load. See Figure 4 for the location of this jumper.

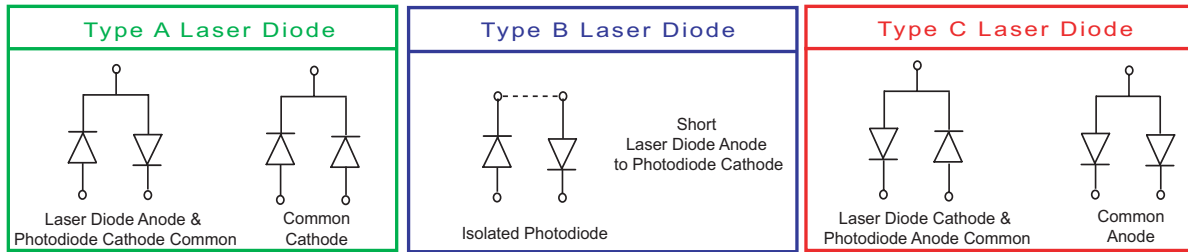
Figure 4: Bottom View, Jumper Locations



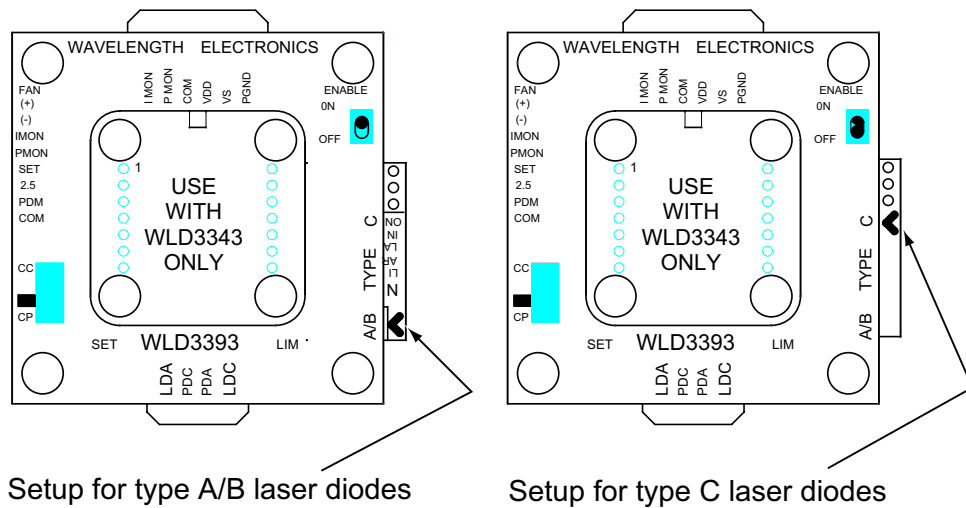
**STEP 3: INSTALL THE LASER DIODE CONFIGURATION BOARD**

**CAUTION:** If the WLD3393 is configured incorrectly for the type of laser diode you are using, damage can result to your laser diode and/or the WLD3393. Refer to Figure 5 to determine the type of laser diode being used. To configure the WLD3393 for your laser diode type, connect the configuration board to the bottom of the WLD3393 so that the arrow on the protruding edge of the configuration board points to either A/B or C. Refer to Figure 6 for example installation.

**Figure 5: Laser Diode Type Schematics: A/B or C**



**Figure 6 - Examples of proper alignment of Laser Diode Configuration Board**



## STEP 4: ATTACH THE HEATSINK AND FAN (optional for less than +5V, 200mA operation)

**HEATSINK REQUIREMENTS.** The WLD3343 is designed to handle currents as high as 2.2A. The WLD3393 demo board, however, limits output current to 2.0A. Attach a heatsink (such as WHS302 with thermal washer WTW002) to the WLD3343 when driving currents higher than 500mA. Attach a fan (such as WXC303 (+5VDC) or WXC304 (+12VDC)) to the heatsink for output currents exceeding 1.0A. If using Wavelength accessories, refer to the WHS302, WTW002, WXC303, and / or the WXC304 datasheets for assembly instructions.

**FAN CONNECTIONS.** Connect the fan leads to the (+) and (-) fan terminal positions on the terminal block and secure with a small flat head screwdriver. The fan connects to the  $V_{DD}$  supply, not  $V_S$ , so care must be exercised to ensure that the proper fan is selected, either +5VDC or +12VDC, when using dual power supplies. Optionally, for lower noise operation, the fan leads may be connected directly to a separate power supply compatible with the fan.

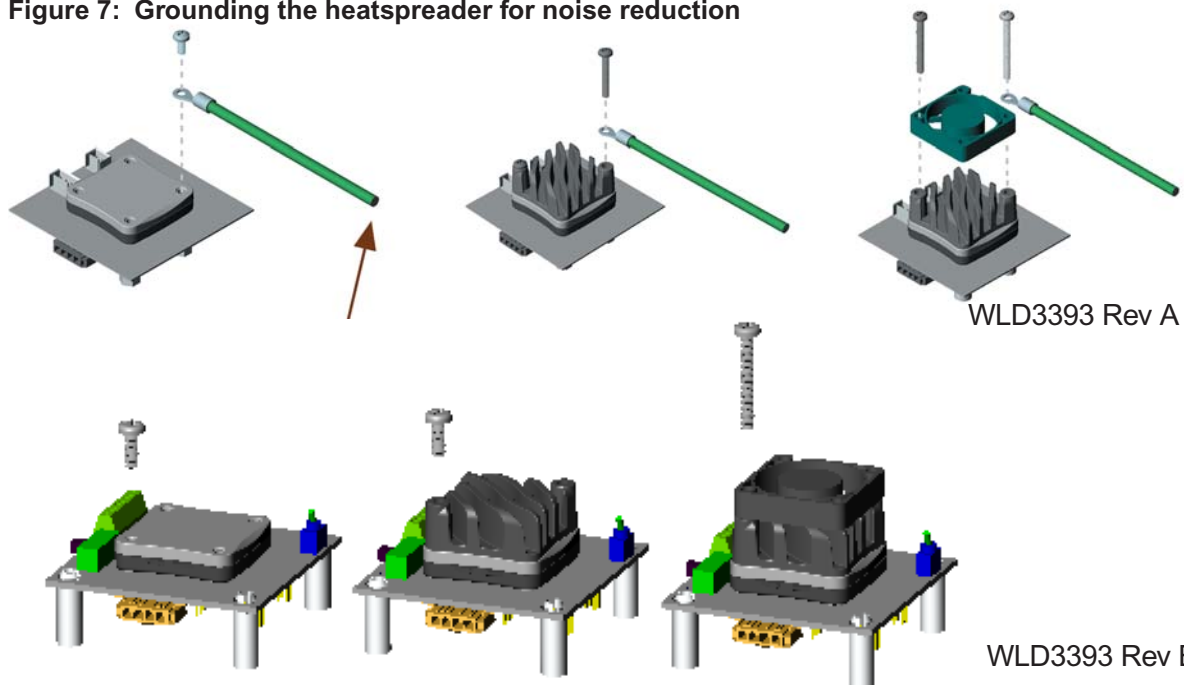
## STEP 5: ATTACH THE $V_{DD}$ AND $V_S$ POWER SUPPLIES

The WLD3393 has two power supply connections,  $V_S$  and  $V_{DD}$ .  $V_S$  provides power for driving the laser (minimum current capacity greater than limit current setting).  $V_{DD}$  provides power to the control electronics (minimum 100mA).  $V_{DD}$  can range from +5 to +12V.  $V_S$  can range from +4.5 to +12V. For simple operation tie  $V_{DD}$  to  $V_S$ . Use PGND for the power return. The common (COM) terminal on the WLD3393 is not intended to act as a power connection, but as the low noise ground reference for connecting an external VSET source, and for monitoring the IMON, PMON, and PDM signals.

A separate  $V_S$  power supply allows the output current stage to operate below the minimum 5V required for the control electronics or up to the +12V maximum (for multiple laser diodes in series). Select  $V_S$  approximately 2.0 volts above the maximum voltage drop across the laser diode to reduce the power dissipation in the WLD3343 component and minimize your heatsinking requirements. Note that for type C laser diodes in Constant Power mode  $V_{DD}$  must be greater than or equal to  $V_S$  to keep the photodiode signal in range.

**NOISE REDUCTION.** For better performance, to reduce noise in the control electronics, it is recommended to connect  $V_{DD}$  and  $V_S$  together at the power supply, running separate wires for  $V_{DD}$  and  $V_S$ . Grounding the heatspreader also can reduce noise. With WLD3393 Rev. B, the screw threads contact a grounded PEM on the board; no ground strap is necessary.

**Figure 7: Grounding the heatspreader for noise reduction**





**STEP 6: SET THE LASER DIODE CURRENT LIMIT**

The WLD3393 LIM trimpot adjusts the laser diode current limit from zero to the full 200 mA or 2.0 Amps, depending on the laser diode current range selected. For accurate laser diode current limit configuration follow these steps sequentially:

1. Connect the demo board’s LDA and LDC terminals directly to an ammeter capable of sensing your maximum laser diode current. If you are using more than +5VDC power supply voltage, place a resistor in series with the ammeter to reduce power dissipation across the WLD. The following equations should be used.

$$R_{LOAD} = \frac{V_S - 2.5}{I_{LIM}} \quad R_{LOAD} \text{ power rating} = I_{LIM}^2 * R_{LOAD}$$

Example calculation:  $V_S = +12V, I_{LIM} = 2A; R_{LOAD} = (12-2.5)/2 = 4.75 \text{ ohm}; 2^2 * 4.75 = 19W$

Another example:  $V_S = +9V, I_{LIM} = 0.5A; R_{LOAD} = (9-2.5)/0.5 = 13 \text{ ohm}; (0.5)^2 * 13 = 3.25W$

2. Configure the demo board for Constant Current (CC) mode operation. See Step 2.
3. Turn the SET trimpot fully counter clockwise (OFF). Adjust the LIM trimpot fully clockwise (ON).
4. Apply power to the WLD3393 and enable the output current by switching the enable switch to the “ON” position. See Figure 1 to locate the switch.
5. Turn the SET trimpot clockwise until the desired maximum current is achieved. Turn the LIM trimpot counter clockwise until the current just begins to decrease. Turn the SET trimpot back fully counterclockwise.
6. Disable the output current by switching the enable switch to the “OFF” position. Remove power from the WLD3393.

**STEP 7: CONNECT THE LASER DIODE AND MONITOR PHOTODIODE**

With power removed from the WLD3393 board, connect the output (4 wire cable) to your laser diode as indicated in Table 1. Firmly press the output cable into the output connector.

**Table 1: Output Cable color code**

PIN #	Wire Color	Function
1	RED	LDA
2	GREEN	PDC
3	WHITE	PDA
4	BLACK	LDC

## STEP 8: MONITOR THE LASER DIODE AND PHOTODIODE CURRENTS

The input connector includes three signals for externally monitoring the WLD3343 laser driver output. IMON, PMON, and PDM allow for monitoring of laser diode current and power intensity depending on the selected mode of operation. The voltages at IMON, PMON, and PDM are all referenced to the common terminal (COM) on the input connector.

**Table 2: Input Cable color code**

PIN #	Wire Color	Function
1	BLUE	PGND
2	ORANGE	VS
3	RED	VDD
4	BLACK	COM
5	WHITE	P MON
6	GREEN	I MON

IMON provides a mechanism for externally monitoring the laser diode current. IMON is available at all times in both CC and CP modes. In the 200mA range,  $V_{IMON}$  has a transfer function of 100mA/V. In the 2.0A range,  $V_{IMON}$  has a transfer function of 1.0A/V. Table 3 summarizes this data.

PMON provides an external indication of the laser diode intensity by measuring photodiode current. Since PD+ and PD- on the WLD3343 are shorted together in CC mode, PMON will only monitor photodiode current in CP mode. When operated in the 200µA range,  $V_{PMON}$  has a transfer function of 100µA/V. When operated in the 2mA range,  $V_{PMON}$  has a transfer function of 1mA/V. Table 4 summarizes this data.

PDM provides a mechanism for monitoring photodiode current in either CC or CP mode. While PMON monitors the feedback used by the control electronics to maintain constant power of the laser, PDM is an external monitor that is independent of the control electronics of the WLD3343. The transfer function for  $V_{PDM}$  to  $I_{PD}$  is the same as for the PMON signal. PDM is only accessible on the terminal block.

**Table 3: Convert IMON voltage to Laser Diode Current**

200 mA Range	2.0 Amp Range
$LDI = V_{IMON} * 100 [ mA ]$	$LDI = V_{IMON} [ AMPS ]$

**Table 4: Convert PMON or PDM voltage to Photodiode Current**

200 µA Range	2 mA Range
$PDI = V_{PMON} * 100 [ \mu A ]$	$PDI = V_{PMON} [ mA ]$



**STEP 9: ADJUST THE SETPOINT VOLTAGE**

The setpoint controls the output of the WLD3343. In constant current mode the setpoint is directly proportional to the laser diode current. In constant power mode the setpoint is directly proportional to photodiode current, allowing for control of the power of the light emitted from the laser diode.

The setpoint voltage can be adjusted either by using the onboard SET trimpot, by applying an external setpoint voltage, or by summing an external setpoint voltage with the setpoint dialed in using the SET trimpot. The sum of the external setpoint voltage and the value dialed in using the SET trimpot can be adjusted from 0 to 2.5 Volts.

*To use only the onboard SET trimpot*, place the VSET SOURCE jumper on the bottom of the WLD3393 evaluation board in the “T” position, and do not connect an external voltage source to the SET terminal on the terminal block. The SET trimpot will allow the setpoint be adjusted from 0V to 2.5V. Figure 6 shows the jumper location.

*To use an external voltage source summed with the setpoint voltage from the on board SET trimpot*, place the VSET SOURCE jumper on the bottom of the WLD3393 to the “T” position. Connect an external voltage source to the SET terminal on the terminal block on the top of the WLD3393 evaluation board. The resulting setpoint voltage will be the sum of the voltage dialed in using the SET trimpot, and the voltage applied to the SET terminal. Figure 6 shows the jumper location.

*To use an external voltage source only for the setpoint*, place the VSET SOURCE jumper on the bottom of the WLD3393 board to the “X” position and connect the external setpoint voltage source to the SET terminal on the terminal block on the top side of the WLD3393 evaluation board. When the SET SOURCE jumper is in the “X” position, the voltage dialed in using the SET trimpot on the WLD3393 is ignored. Figure 6 shows the jumper location.

In case an external voltage source is not available, but setpoint adjustment needs to be external, a remotely located potentiometer can easily be connected to the WLD3393 to adjust the setpoint. To use a remote potentiometer, connect the CW lead of the potentiometer to the terminal position marked 2.5 on the terminal block on the top of the WLD3393 board. Connect the CCW lead of the potentiometer to the COM terminal and connect the wiper to the SET terminal and ensure that the VSET SOURCE jumper on the bottom of the board is set to the X position.

**Table 5: Relate VSET voltage to Laser Diode Current**

200 mA Range	2.0 Amp Range
$LDI = V_{SET} * 100 [mA]$	$LDI = V_{SET} [AMPS]$

**Table 6: Relate V<sub>SET</sub> voltage to Photodiode Current**

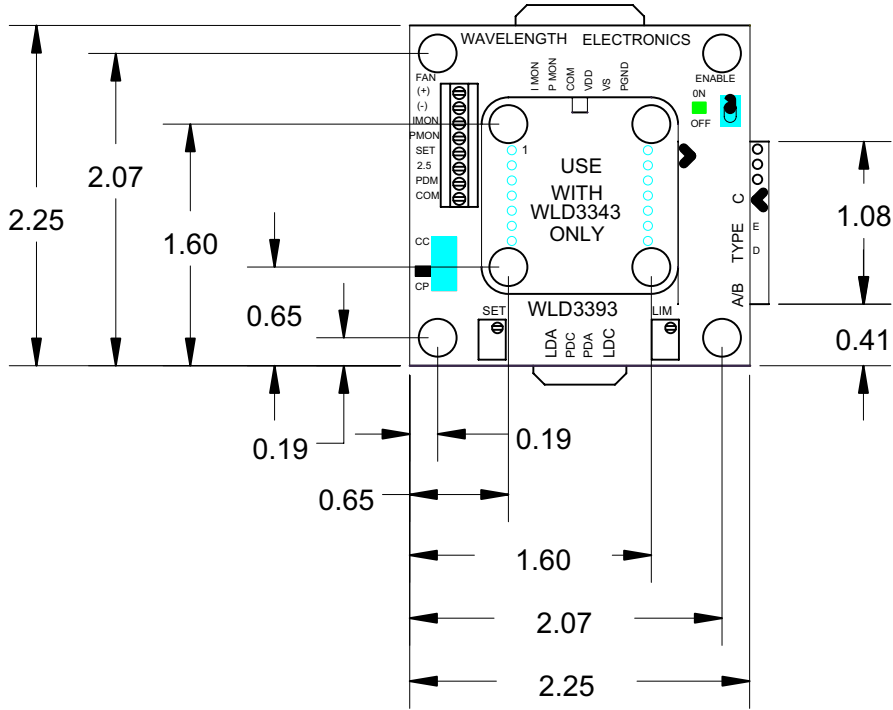
200 μA Range	2 mA Range
$PDI = V_{PMON} * 100 [μA]$	$PDI = V_{PMON} [mA]$

**STEP 10: ENABLE OR DISABLE THE OUTPUT CURRENT**

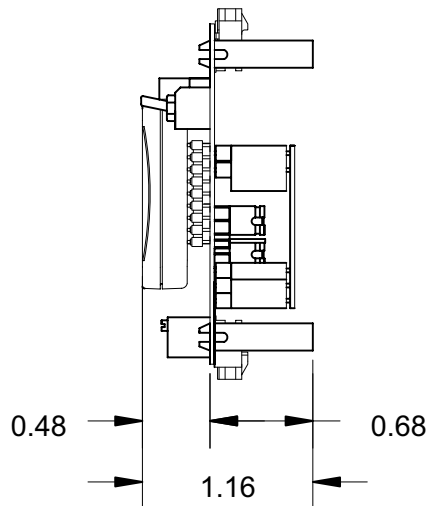
The WLD3343 output current can be enabled and disabled using the onboard toggle switch. The output is enabled when the green ON LED indicator is lit (see Figure 1).

*CHARACTERIZE YOUR LASER DIODE.* Configure the WLD3393 for Constant Current mode. Step the external voltage setpoint to scan laser diode current. Monitor the intensity of the laser diode using PDM.

TOP VIEW (inches)



RIGHT SIDE VIEW



**CERTIFICATION:**

Wavelength Electronics, Inc. (Wavelength) certifies that this product met it's published specifications at the time of shipment. Wavelength further certifies that its calibration measurements are traceable to the United States National Institute of Standards and Technology, to the extent allowed by that organization's calibration facilities, and to the calibration facilities of other International Standards Organization members.

**WARRANTY:**

This Wavelength product is warranted against defects in materials and workmanship for a period of 90 days from date of shipment. During the warranty period, Wavelength will, at its option, either repair or replace products which prove to be defective.

**WARRANTY SERVICE:**

For warranty service or repair, this product must be returned to the factory. An RMA is required for products returned to Wavelength for warranty service. The Buyer shall prepay shipping charges to Wavelength and Wavelength shall pay shipping charges to return the product to the Buyer upon determination of defective materials or workmanship. However, the Buyer shall pay all shipping charges, duties, and taxes for products returned to Wavelength from another country.

**LIMITATIONS OF WARRANTY:**

The warranty shall not apply to defects resulting from improper use or misuse of the product or operation outside published specifications.

No other warranty is expressed or implied. Wavelength specifically disclaims the implied warranties of merchantability and fitness for a particular purpose.

**EXCLUSIVE REMEDIES:**

The remedies provided herein are the Buyer's sole and exclusive remedies. Wavelength shall not be liable for any direct, indirect, special, incidental, or consequential damages, whether based on contract, tort, or any other legal theory.

**NOTICE:**

The information contained in this document is subject to change without notice. Wavelength will not be liable for errors contained herein or for incidental or consequential damages in connection with the furnishing, performance, or use of this material. No part of this document may be photocopied, reproduced, or translated to another language without the prior written consent of Wavelength.

**SAFETY:**

There are no user serviceable parts inside this product. Return the product to Wavelength for service and repair to ensure that safety features are maintained.

**LIFE SUPPORT POLICY:**

As a general policy, Wavelength Electronics, Inc. does not recommend the use of any of its products in life support applications where the failure or malfunction of the Wavelength product can be reasonably expected to cause failure of the life support device or to significantly affect its safety or effectiveness. Wavelength will not knowingly sell its products for use in such applications unless it receives written assurances satisfactory to Wavelength that the risks of injury or damage have been minimized, the customer assumes all such risks, and there is no product liability for Wavelength. Examples of devices considered to be life support devices are neonatal oxygen analyzers, nerve stimulators (for any use), auto transfusion devices, blood pumps, defibrillators, arrhythmia detectors and alarms, pacemakers, hemodialysis systems, peritoneal dialysis systems, ventilators of all types, and infusion pumps as well as other devices designated as "critical" by the FDA. The above are representative examples only and are not intended to be conclusive or exclusive of any other life support device.

REVISION HISTORY		
REVISION	DATE	NOTES
REV. E	Oct-03	Initial release
REV. F	31-Aug-09	Updated links to support new website



**WAVELENGTH ELECTRONICS, INC.**

51 Evergreen Drive  
Bozeman, Montana, 59715  
web: [www.teamwavelength.com](http://www.teamwavelength.com)

phone: (406) 587-4910 Sales/Tech Support  
fax: (406) 587-4911  
e-mail: [sales@teamwavelength.com](mailto:sales@teamwavelength.com)